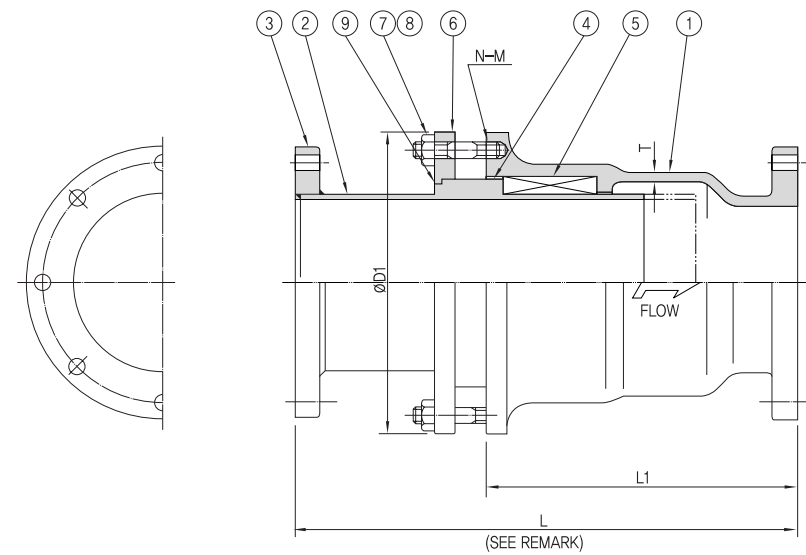


TYPE : SLEEVE



5kg/cm²

Unit :mm

NOMINAL DIA		L			ø D1	L1	T	N-M
INCH	mm	SETL	MAXL	MINL				
2"	50A	345	395	275	125	208	8	4-M12
2 1/2"	65A	350	400	280	140	213	8	4-M12
3"	80A	385	445	325	174	243	9	4-M16
4"	100A	390	450	330	199	249	9	8-M16
5"	125A	390	450	330	227	249	10	8-M16
6"	150A	400	457	337	252	254	11	8-M16
8"	200A	420	482	362	321	282	12	8-M16
10"	250A	435	494	374	374	292	14	12-M20
12"	300A	455	517	397	426	305	15	12-M20
14"	350A	465	524	404	461	310	15	12-M22

10kg/cm²

Unit :mm

NOMINAL DIA		L			ø D1	L1	T	N-M
INCH	mm	SETL	MAXL	MINL				
2"	50A	368	423	313	125	229	8	4-M16
2 1/2"	65A	382	442	322	140	236	8	4-M16
3"	80A	415	475	355	174	277	9	4-M16
4"	100A	415	475	355	199	277	9	8-M16
5"	125A	432	492	372	227	282	11	8-M20
6"	150A	439	499	379	252	287	12	8-M20
8"	200A	458	518	398	321	306	12	12-M20
10"	250A	475	535	415	374	311	15	12-M22
12"	300A	510	570	450	426	338	16	16-M22
14"	350A	517	577	457	473	343	18	16-M22

16kg/cm²

Unit :mm

NOMINAL DIA		L			ø D1	L1	T	N-M
INCH	mm	SETL	MAXL	MINL				
2"	50A	432	492	372	136	251	8	8-M16
2 1/2"	65A	456	516	396	152	259	8	8-M16
3"	80A	469	529	409	172	295	9	8-M16
4"	100A	476	536	416	210	295	9	8-M20
5"	125A	520	580	460	236	300	11	8-M20
6"	150A	522	582	462	262	305	12	12-M20
8"	200A	544	604	484	318	327	12	12-M20
10"	250A	576	636	516	376	332	15	12-M22
12"	300A	588	648	528	432	362	16	16-M22
14"	350A	612	672	552	470	367	18	16-M22

• NOTE : THE ABOVE PIPES CONNECTION SHOWS JIS PIPES BUT OTHERS SUCH AS ANSI, BS, DIN CAN BE AVAILABLE ON REQUEST.



TYPE APPROVAL CERTIFICATES



HEAD OFFICE & FACTORY
 #1173-2 Jisa-Dong, Gangseo-Gu, Pusan, Korea 618-230.
 tel. 82-51-974-6301(rep) fax. 82-51-974-6305
 www.kwangsan.com
 e-mail : kwangsan@kwangsan.com

Expansion Joint



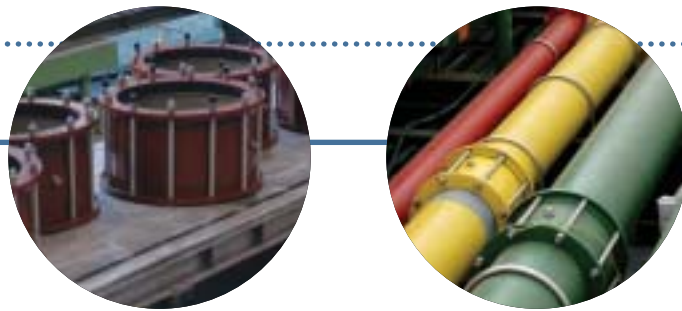
INSTALLATION REQUIREMENT

APPLICATION INFORMATION

MATERIAL & DIMENSION TABLE

TYPE APPROVAL CERTIFICATES





Expansion Joint

INSTALLATION REQUIREMENT

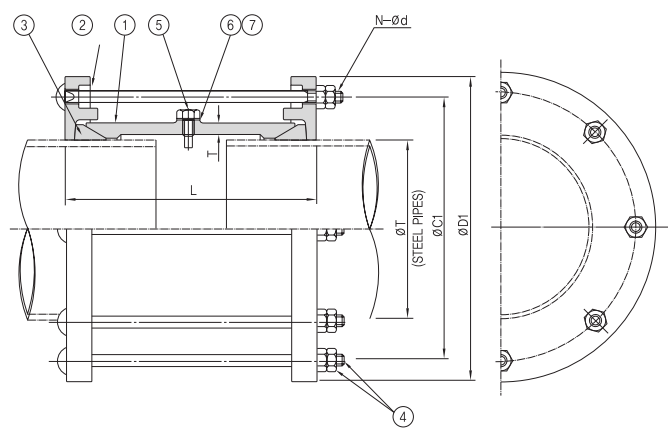
- Divide the pipe length into section ensuring that the expansion is within the allow able movement of a joint.
- Both end of pipe to be smooth cut and chamfered (squared off) not to hurt gasket material by mechanical damage such as scratching.
- Push follower, gasket, middle ring, follower in regular sequence. When inserting gasket material please check again where there is a sharp edge of piping with no burring.
- Try to positioning the anchor bolt of EXPANSION JOINT on to both pipes.
- Bolting each hole of end ring and tighten nut properly.

APPLICATION INFORMATION

- There are lost of applicable fluid lines in piping in general.
For the details of application, please refer to our type certificates or contact our people without hesitation.



TYPE : DRESSER (FOR STEEL PIPES) “SHORT” & “LONG”

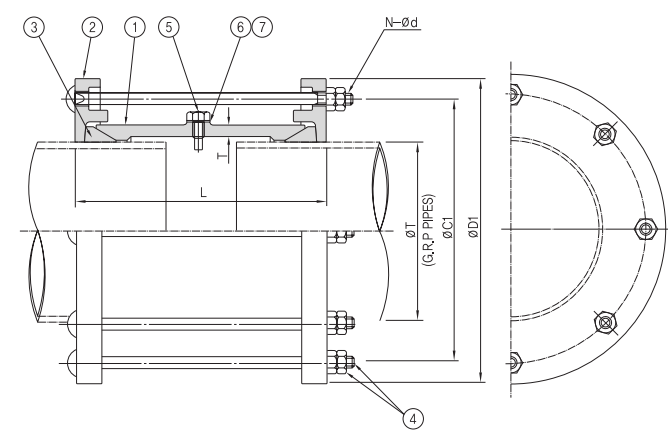


Unit :mm

NOMINAL DIA INCH	mm	øD	øD1	øC1	N- ød	L(APPROX)		T		WEIGHT(kg)	
						STANDARD	LONG	STANDARD	LONG	STANDARD	LONG
1 1/2"	40A	48.6	118	94	3-15	153	273	5.2	5.2	3.2	6
2"	50A	60.5	132	108	3-15	153	273	6	6	4.1	8.5
2 1/2"	65A	76.3	149	125	4-15	154	273	7	7	5.1	10.2
3"	80A	89.1	176	146	4-19	164	282	7	7	7.5	14
4"	100A	114.3	204	174	4-19	164	284	9	9	11	19.1
5"	125A	139.8	230	200	6-19	174	294	10	10	14	25
6"	150A	165.2	262	230	6-19	180	300	11	11	16.5	31.1
8"	200A	216.3	320	286	6-19	187	307	13	13	24.2	46
10"	250A	267.4	373	339	8-19	189	309	13	13	30.7	58
12"	300A	318.5	426	390	8-19	191	311	13	13	36.8	69
14"	350A	355.6	466	430	10-19	191	311	13	13	45.2	82.1
16"	400A	406.4	520	482	10-19	191	311	13	13	52	97.2
18"	450A	457.2	578	538	12-19	195	315	13	13	61.6	108.3
20"	500A	508.0	634	592	12-19	215	340	14	15	75.3	122
22"	550A	558.8	686	644	14-19	215	340	14	15	85.1	138
24"	600A	609.6	736	694	14-19	215	340	14	15	94.6	150.1
26"	650A	660.4	790	746	16-19	215	340	14	15	109.2	168.1
28"	700A	711.2	842	798	16-19	215	340	14	15	121.5	187
30"	750A	762.0	894	850	16-19	215	340	14	15	135.5	202
32"	800A	812.8	948	904	16-19	215	340	14	15	152.4	215

• NOTE : THE ABOVE PIPES CONNECTION SHOWS JIS PIPES BUT OTHERS SUCH AS ANSI, BS, DIN CAN BE AVAILABLE ON REQUEST.

TYPE : DRESSER (FOR G.R.P. PIPES) “SHORT” & “LONG”



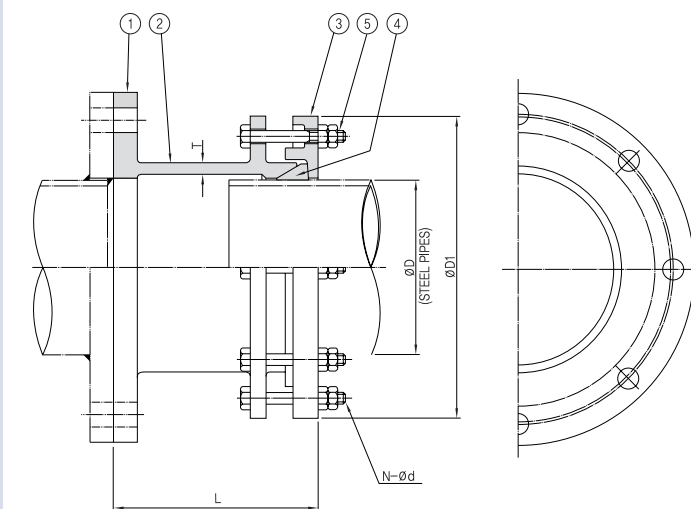
Unit :mm

NOMINAL DIA INCH	mm	øD (GRP)	øD1	øC1	N- ød	L(APPROX)		T	
						STANDARD	LONG	STANDARD	LONG
1 1/2"	40A	49.0	118	94	3-15	153	273	5.2	5.2
2"	50A	61.3	132	108	3-15	153	273	6	6
3"	80A	90.0	176	146	4-19	164	282	7	7
4"	100A	115.6	204	174	4-19	164	284	9	9
6"	150A	169.4	262	230	6-19	180	300	11	11
8"	200A	221.8	327	293	6-19	187	307	13	13
10"	250A	279.1	386	352	8-19	189	309	13	13
12"	300A	332.9	442	406	8-19	191	311	13	13
14"	350A	358.6	470	434	10-19	191	311	13	13
14"	350A	380.6	493	457	10-19	191	311	13	13
16"	400A	409.6	525	487	10-19	191	311	13	13
16"	400A	432.2	548	509	10-19	191	311	13	13
18"	450A	460.6	583	543	12-19	195	315	13	13
18"	450A	484.0	606	566	12-19	195	315	13	13
20"	500A	511.7	639	597	12-19	215	340	14	15
20"	500A	536.3	663	621	12-19	215	340	14	15
24"	600A	614.6	742	700	14-19	215	340	14	15
24"	600A	639.9	768	726	14-19	215	340	14	15
30"	750A	767.9	901	857	16-19	215	340	14	15
30"	750A	796.4	930	885	16-19	215	340	14	15

• NOTE : THE ABOVE PIPES CONNECTION SHOWS G.R.P. PIPES BUT OTHERS SUCH AS ANSI, BS, DIN CAN BE AVAILABLE ON REQUEST.

EXPANSION JOINT

TYPE : FLANGE ADAPTER (FOR STEEL PIPES)

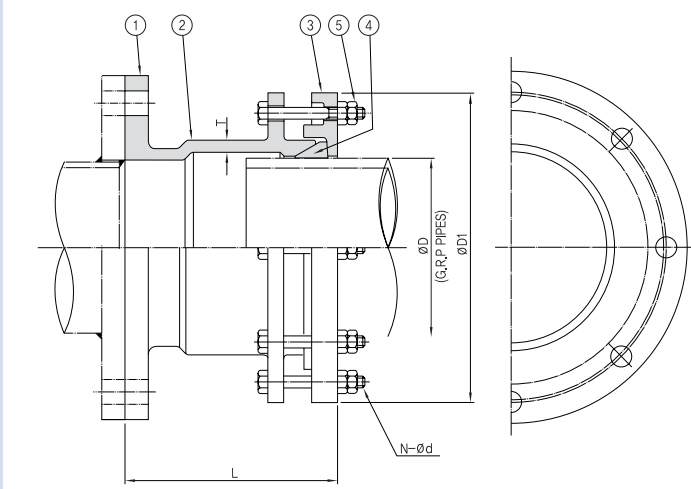


Unit :mm

NOMINAL DIA INCH	mm	øD	øD1	T	N- ød	L(APPROX)		
						STANDARD	LONG	LONG
1 1/2"	40A	48.6	118	6	3-15	172	176	176
2"	50A	60.5	132	6	3-15	174	176	176
2 1/2"	65A	76.3	149	7	4-15	175	178	183
3"	80A	89.1	176	7	4-19	179	183	187
4"	100A	114.3	204	9	4-19	182	184	188
5"	125A	139.8	230	10	6-19	187	191	193
6"	150A	165.2	262	11	6-19	192	196	198
8"	200A	216.3	320	13	6-19	197	199	203
10"	250A	267.4	373	13	8-19	200	202	206
12"	300A	318.5	426	13	8-19	201	203	209
14"	350A	355.6	466	13	10-19	203	205	213
16"	400A	406.4	520	13	10-19	203	211	217
18"	450A	457.2	578	14	12-19	205	213	221
20"	500A	508.0	634	14	12-19	207	215	225
22"	550A	558.8	686	14	14-19	209	221	227
24"	600A	609.6	736	14	14-19	209	227	229
26"	650A	660.4	790	14	16-19	209	227	231
28"	700A	711.2	842	14	16-19	209	227	233
30"	750A	762.0	894	14	16-19	211	227	235
32"	800A	812.8	948	14	16-19	211	227	237

• NOTE : THE ABOVE PIPES CONNECTION SHOWS JIS PIPES BUT OTHERS SUCH AS ANSI, BS, DIN CAN BE AVAILABLE ON REQUEST.

TYPE : FLANGE ADAPTER (FOR G.R.P. PIPES)



Unit :mm

NOMINAL DIA INCH	mm	øD (GRP)	øD1	T	N- ød	L(APPROX)		
						STANDARD	LONG	LONG
1 1/2"	40A	49.0	118	5.2	3-15	172	176	176
2"	50A	61.3	132	6	3-15	174	176	176
3"	80A	90.0	176	7	4-19	179	183	183
4"	100A	115.6	204	9	4-19	182	184	188
6"	150A	169.4	262	11	6-19	192	196	198
8"	200A	221.8	327	13	8-19	197	199	203
10"	250A	279.1	386	13	8-19	200	202	206
12"	300A	332.9	442	13	8-19	201	203	209
14"	350A	358.6	470	13	10-19	203	205	213
14"	350A	380.6	493	13	10-19	203	205	213
16"	400A	409.6	525	13	10-19	203	211	217
16"	400A	432.6	548	13	10-19	203	211	217
18"	450A	460.6	583	13	12-19	205	213	221
18"	450A	484.0	606	13	12-19	205	213	221
20"	500A	511.7	639	14	12-19	207	215	225
20"	500A	536.3	663	14	12-19	207	215	225
24"	600A	614.6	742	14	14-19	209	227	229
24"	600A	639.9	768	14	14-19	209	227	229
30"	750A	767.9	901	14	16-19	211	227	235
30"	750A	796.4	930	14	16-19	211	227	235

• NOTE : THE ABOVE PIPES CONNECTION SHOWS G.R.P. PIPES BUT OTHERS SUCH AS ANSI, BS, DIN CAN BE AVAILABLE ON REQUEST.